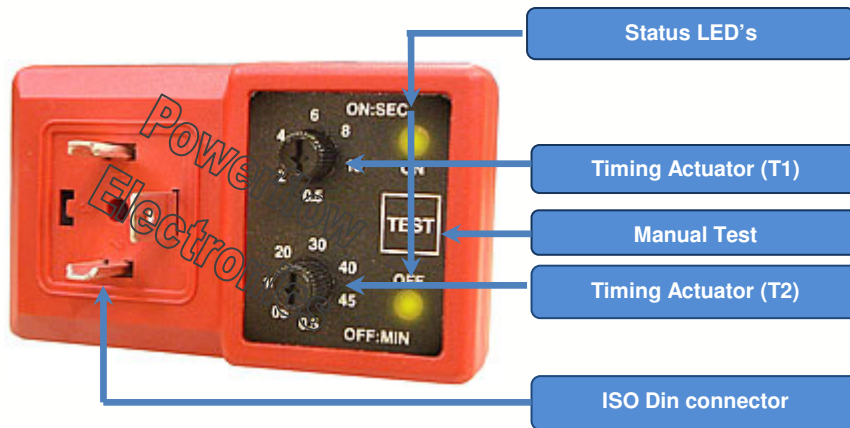
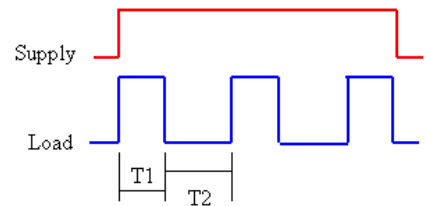


# Solenoid Valve Timer 790 Series



## Repeat Cycle Timer

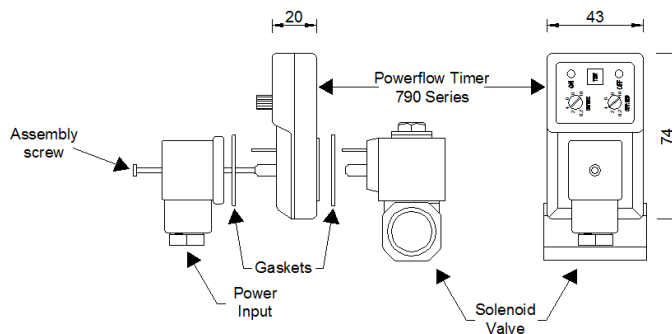


Upon application of power the timer resets, enters the ON state for a period T1, then switches OFF for a period T2. This cycle repeats until power is removed.

## Applications

- ◆ Sampling gas or Liquids
- ◆ Air dryers
- ◆ Effluent sampling
- ◆ Sprinkler systems
- ◆ Auto drain valve: automatic discharge of condensate
- ◆ Pneumatic vibration systems (e.g. Powder silos)
- ◆ Automatic lubrication systems
- ◆ Dosing systems

## Technical Specification



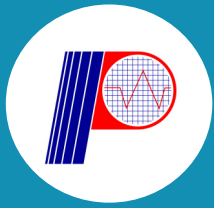
Every effort has been taken to ensure the accuracy of this specification. However in order to maintain our technological lead we are continuously improving our products which could, without notice result in amendments or omissions to this specification. We cannot accept responsibility for damage, injury, loss or expenses resulting therein.

Specification				
Timing Scale	T1 Time	Model Specific	T2 Time	Model Specific
<b>Supply Voltage</b>	24-240V AC/DC 50/60Hz or 12-24V DC (Standard)		Other supply voltages available on request	
<b>Current Consumption</b>	4mA Max.		<b>Timing Temp. Coefficient</b>	+ or - 0.005% °C
<b>Operating Temp.</b>	-10 to +60°C		<b>Scale Accuracy</b>	+ or -10%
<b>Environmental Protection</b>	IP65, NEMA IV		<b>Reset/ Test</b>	Manual Touch Switch
<b>Switch Capacity</b>	1 Amp.		<b>Printed Circuit Board</b>	UL 94V0
<b>Inrush Current</b>	10 Amps for 10mSec		<b>Repeat Accuracy</b>	+ or - 1%
<b>Switching Holding Voltage</b>	400V		<b>Indicators</b>	LED's to indicate phases
<b>Duty Cycles</b>	100%		<b>Design Standard</b>	VDE 0110C
<b>Input</b>	DIN 46350-A / ISO 4400		<b>Output</b>	DIN 46350-B / ISO 6952
<b>Supplied</b>	Flat Gasket & screw		<b>Optional Extras</b>	Screws / Connectors / Power Cords



International Organization for Standardization





# Solenoid Valve Timer 790 Series

<b>Repeat Cycle Timer <u>Earth at 0</u></b>		
<b>Part Number</b>	<b>T1 Time</b>	<b>T2 Time</b>
<b>790-01-180</b>	0.02 – 3Sec.	0.5 – 45Min.
<b>790-01-013</b>	0.5 – 10Sec.	0.5 – 45Min.
<b>790-01-182</b>	0.5Sec.	2 – 120Min.
<b>790-01-211</b>	10Sec.	0.5 – 45Min.
<b>790-01-181</b>	30Sec.	0.5 – 45Min.
<b>790-01-183</b>	0.5Sec. – 10Sec.	60Min.
<b>Repeat Cycle Timer <u>Earth at 6</u></b>		
<b>Part Number</b>	<b>T1 Time</b>	<b>T2 Time</b>
<b>790-01-025</b>	0.02 – 3Sec.	0.5 – 45Min.
<b>790-01-008</b>	0.5 – 10Sec.	0.5 – 45Min.
<b>790-01-207</b>	0.5Sec.	2 – 120Min.
<b>790-01-212</b>	10Sec.	0.5 – 45Min.
<b>790-01-206</b>	30Sec.	0.5 – 45Min.
<b>790-01-208</b>	0.5Sec. – 10Sec.	60Min.
<p><b>Other timings available on request:</b> <i>msec, sec, mins, hrs, days, weeks, months</i> Fixed timings available Memory backup option Standard Colour: Black Other Colours Available</p>		