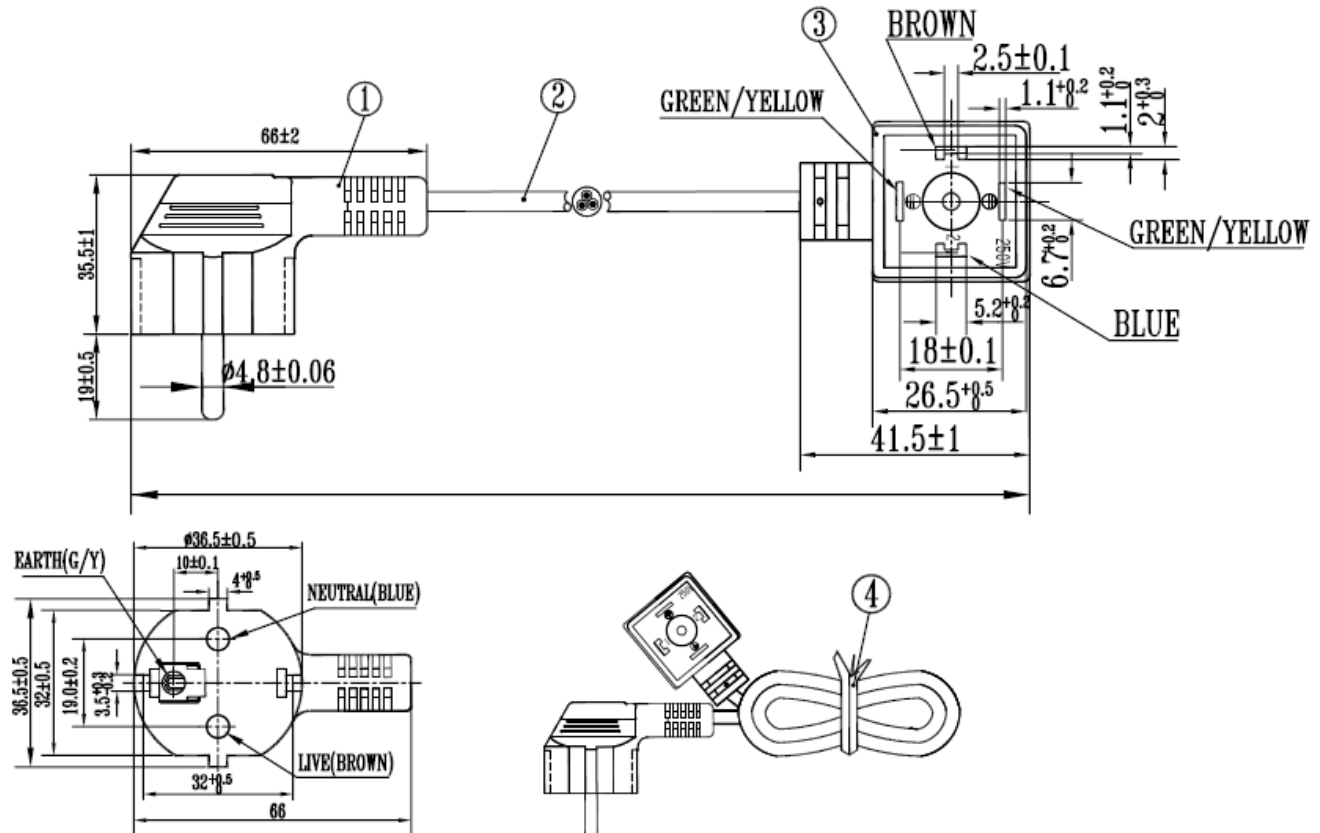


*CHANGE MARKING OF CABLE FROM "N14842" TO "NSW14842"



DIMENSIONS AND CHARACTERISTICS OF CORD

- RATED VOLTAGE : 300/500V
- NUMBER OF CORES : 3
- CONDUCTOR CONSTRUCTION : 26/0.185
- AVERAGE THICKNESS OF INSULATION : 0.60mm
- AVERAGE THICKNESS OF JACKET : 0.80mm
- PVC INSULATION OVERALL DIAMETER : $\phi 2.35 \pm 0.10$ mm
- PVC JACKET OVERALL DIAMETER : $\phi 6.80 \pm 0.20$ mm

THE CORD APPROVED BY VDE, FIMKO AND SAA.
THE PLUG APPROVED BY VDE, FIMKO AND IMQ.

MARKING:

THE MARKING OF THE CORD:

<VDE> NSW14842

H05VV-F 3G 0.75mm²

THE MARKING OF THE PLUG:

GMF02 16A 250V~

THE MARKING OF THE PLUG TOP :

PF 1 2 250V

ALL PARTS COMPLY WITH RoHS

Constructed				Material		
Checked						
Approved				Date Created	Volume	Pieces
	Name	Signature	Date			Sheet
Sheet		Units	[mm]			
Scale	Name			Part Number		
1 : 1	European Cable with Din A Output					